

Clinicopathologic challenge

Enlarging hyperpigmented nodule on the right calf

Geoffrey F. S. Lim¹, BS, Scott J. M. Lim², DO, FAOCD, Mandana Mahmoodi³, MD, and Arash Radfar³, MD, PhD

¹Drexel University College of Medicine, Philadelphia, PA, USA, ²LLC, Erie, PA, USA, and ³Miraca Life Sciences, Newton, MA, USA

Correspondence

Geoffrey F. S. Lim, BS
Drexel University College of Medicine
1600 Walnut Street, Apartment 302
Philadelphia
PA 19103
USA
E-mail: gfl25@drexel.edu

Disclosures: Dr Scott J.M. Lim is a member of the Speakers Bureau of Allergan, Inc.

Case report

A 71-year-old woman with a history of 3.0-mm-deep melanoma of the left groin presented on routine follow-up with a 1.2-cm-wide enlarging hyperpigmented nodule on the contralateral posterior calf region (Fig. 1a). The patient distinctly recalls a pencil puncture wound at the same site 54 years earlier. Further exam was unremarkable, with no evidence of palpable adenopathy or suspicious lesions. A full-thickness narrow-margin excisional biopsy was performed. Intraoperatively,



Figure 1 (a) Enlarged hyperpigmented nodule 1.2 cm in diameter on the right posterior calf region. (b) Intraoperative view of hyperpigmented black tissue in the subcutis

What is your diagnosis?

hyperpigmented black tissue was observed in the subcutis (Fig. 1b).

Microscopic findings and clinical course

Histopathological examination revealed a dense lymphohistiocytic infiltrate with admixed foreign body giant cells, intra- and extracellular pigment and polarizable material

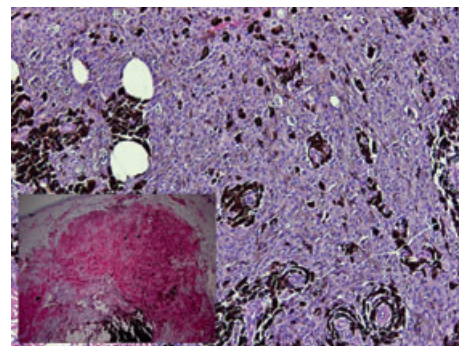


Figure 2 Dense lymphohistiocytic infiltrate with admixed foreign body giant cells, intra- and extracellular pigment and polarizable material (hematoxylin and eosin, original magnification $\times 200$). Inset shows low-power image of tissue stained with macrophage-specific CD68 immunohistochemical marker (CD68 stain, original magnification $\times 40$)